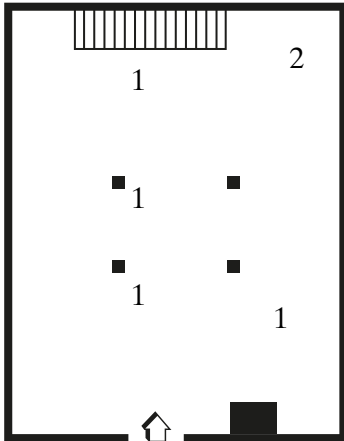
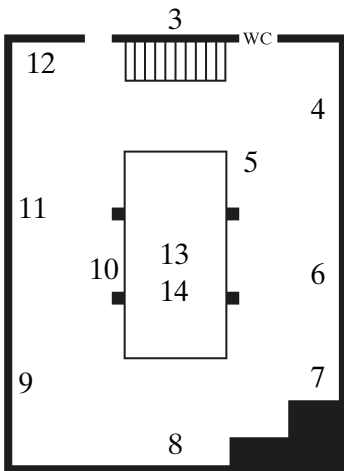


FLOORPLAN

GROUND FLOOR – KRISTINA ÖLLEK



FIRST FLOOR – KRISTINA ÖLLEK



On the first floor the installation *Filter Feeders, Double Binds and Other Silicones* also includes the self-picked oyster shells from Zeeland, silicone, two blue metal support structures with silicone, surface mat covered with sand, sea salt on the guardrail.

1. Nautilus New Era (2018)

Installation, diasec print, 150 x 200 cm, blue silicone gel pads, air compressor spiral hose, cobalt-pigmented sand, UV print, plexiglass 24 x 17 cm, tablet holder, UV print on acrylic 37 x 47 cm (thermo-formed, handmade), UV print on acrylic 24 x 30 cm (thermo-formed, handmade), video with sound 11' 38"; headphones, wondergel cushions, memory foam, 3 dark gray fibo blocks.

2. Powered By (2020–2021)

Fountain, green-colored water, clay, emerald green pigment, fluorescent green pigment, epoxy resin, energy drink cans, plexiglass 70 x 90 cm.

3. Feeling With the Water Jelly (2020)

Inkjet print on aluminium, 70 x 97 cm, museum glass, showcase frame covered with silicone (UV).

4. Under the Pavement Lies a Beach (2019)

Diasec, 50 x 75 cm, epoxy resin.

5. They Breathe Water. Bioaccumulation no.2: Silicon Ostreoida (2019)

Diasec TruLife Museum Acrylic, 50 x 70 cm, showcase frame covered with sand.

6. They Breathe Water. Bioaccumulation no.3: Acrylic Ostreoida (2019)

Diasec TruLife Museum Acrylic, 50 x 70 cm, showcase frame covered with sand.

7. Mother of MicroPearlastic (2021)

Inkjet print, 66 x 48 cm, with grown sea salt crystals, showcase frame covered with sea salt.

8. Sheer Liquid Mytilus (2019)

Diasec, 95 x 133 cm, epoxy resin.

9. No Spa, But Urgency (2020)

Diasec TruLife Museum Acrylic, 55 x 70 cm, showcase frame covered with sand.

10. Medusa Meticulously (2019)

Diasec TruLife Museum Acrylic, 55 x 70 cm, showcase frame covered with sand.

11. Jellyfish, Slime or Other Silicones (2019)

Diasec, 50 x 70 cm, 35 x 49 cm, silicone sealant (UV).

12. Seeing Sea, Foam, Salt and Other Layers (2021)

Inkjet print, 50 x 70 cm, with grown sea salt crystals, showcase frame covered with sea salt.

13. On the Floating Sea with Squishy Jellies and Silicon Solar Panels (2021)

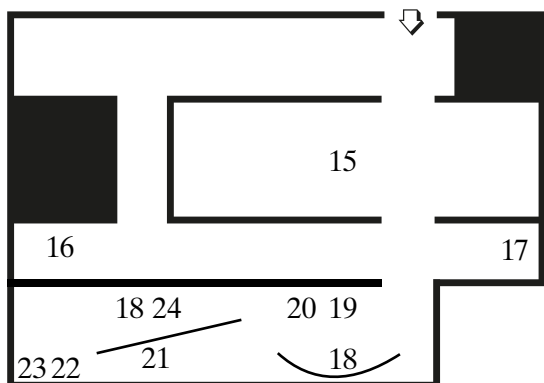
Digital print on light box fabric, 227 x 490 cm.

14. The Flow Through The Metal Grids of Water, Sea Salt Other Geopolitics of Power (2021)

Metal grid frames with grown sea salt crystals. 10 pieces of 100 x 150 cm, 80 cm x 150, 60 x 160 cm.



BASEMENT —
SAMI HAMMANA, ELISA STRINNA



15. Sami Hammana

~~~~ (2020)

Film-essay, 20' 20"

Edited by: Ioana Tomici  
Sound by: Lendl Barcelos  
Voice by: Deca Mukhtar-Tawheed  
Typeface by: Simone Browne  
Colour by: Seecum Cheung

**16. Elisa Strinna**

*The Upwelling* (2018–2019)

HD/4k video, 6' 45"

**17. Elisa Strinna**

*Third Nature – Sybil* (2019–2021)

Porcelain, stoneware, sound (electromagnetic frequencies), variable dimensions.

**18. Elisa Strinna**

*Hadean Stories* (2018–2021)

Porcelain, porcelain plaster, resin, variable dimensions.

**19. Elisa Strinna**

*Hadean Stories* (2019)

Copper, alum crystals, cement, water, variable dimensions.

**20. Elisa Strinna**

*Third Nature* (2019)

Porcelain and alum crystals.

**21. Elisa Strinna**

*Third Nature – Multispecies Infrastructures (Metridium Farcimen and Porifera)* (2021)

Porcelain

**22. Elisa Strinna**

*Hadean Stories* (2021)

Jesmonite, alum crystals, water, variable dimensions.

**23. Elisa Strinna**

*Third Nature – Electric Bones* (2018–2019)

Porcelain, porcelain plaster, variable dimensions.

**24. Elisa Strinna**

*Blind Sun* (2019)

Sound piece, 29', in collaboration with Roberto Francesco (composer) and Beatriz Ventura (singer).

